



Image of Model #K1000-2T. Options and features may differ.

## SPECIFICATIONS

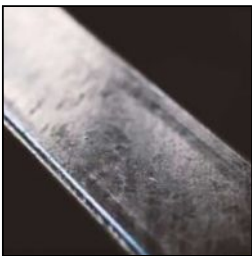
CAPACITY	SUSPENSION	UNITS	MAX LOAD PER MOUNTING SECTION (LBS.)	TIRE SIZE	OVERALL WIDTH	OVERALL LENGTH	OVERALL HEIGHT	MOUNTING AREA WIDTH	MOUNTING AREA HEIGHT	LENGTH BETWEEN CROSSBARS
1,000	TORSION	1, 2	95	4.80X12B	62"	16'	27"	60"	UNLIMITED	72"

## STANDARD FEATURES



### Bias-Ply Tires

High quality USDOT-rated tires. Standard on all 5 STARR, pontoon, skiff and jon models, and models 90" wide and narrower. Easily upgraded to radial tires at time of order. Includes [KENDACARE - LOADSTAR TIRE ROADSIDE ASSISTANCE PROGRAM](#).



### Galvanized Steel Frame

Tubular structural steel, fully hot dip galvanized, provides the ultimate finish for any boat trailer. Tubular design shrouds wiring and brake lines from damage. All machining and welding is performed before galvanizing, so there are no surfaces left unprotected from a boat trailer's ultimate enemy: corrosion.



### Torsion Axles

Torsion axles provide independent suspension, exceptional rigidity, corrosion resistance, and a far superior ride to any leaf spring suspension. Available on most models.



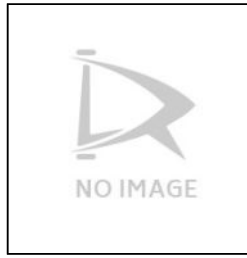
### NMMA / NATM Certified

Each year Load Rite trailers undergo a detailed inspection process in order to earn the right to proudly display this certification on products we manufacture.



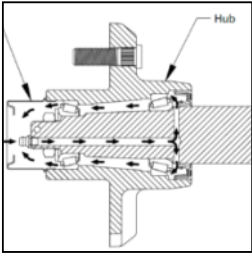
### LED Lighting

LED lights offer far greater reliability than incandescent fixtures. Long-lasting and waterproof design make these lights ideal for any trailer application.



### KendaCare – LoadStar® Tire Roadside Assistance Program

[Click here](#) for more information from Americana Tire.



### Greaseable Hubs

Trailer with peace of mind knowing that you've inspected the condition and topped off the lubricant level in each hub of your trailer.



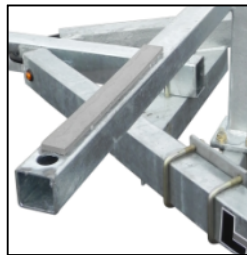
### Plastic Fenders

Impact-resistant plastic fenders on models with 12" and smaller wheels. Wheels 13" and larger require aluminum fenders.



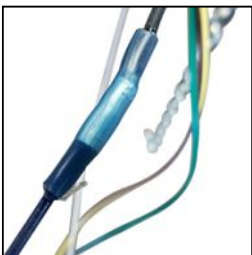
### DOT Rated Tires and Lighting

All Load Rite original equipment tires and lighting components are fully DOT approved.



### Cushioned Support Rails

Soft support for canoes and kayaks minimizes direct contact with galvanized steel.



### Heat-Shrunk Sealed, Concealed Wiring

Standard equipment on all trailers 17' and longer except welded frame models.



### 2 Plus 3 Years Limited Warranty

## OPTIONS



### **Tongue Jack**

Tongue jacks are recommended on all trailers. Appearance and specifications vary by application. Tongue jacks are optional on all models where not original equipment.



### **Spare Tire and Carrier**

The most important option to consider, every trailer should have a spare tire readily available. Consult dealer for recommended bracket for individual application.



### **Radial Tires**

Smoother riding and longer wear life than many bias-ply tires. A highly recommended upgrade. Available for 13" and larger wheels.